



United Way of Washington County-East 2021 Annual Report



United Way



United Way of
Washington County-East

celebrating
70
years

A LETTER FROM THE BOARD PRESIDENT AND EXECUTIVE DIRECTOR

Dear Donors and Partners, I want to take this opportunity to recognize you and our volunteers for your continued generous support. I have spent some time reflecting on how even the smallest acts of kindness have the most impact on someone's life. We are deeply connected by the compassionate actions of our community members, and I believe we truly have something special here in Washington County.

The United Way of Washington County East remains at the forefront of community-wide issues and supporting our local agencies. We continue to strive to disburse at least 75% of our funds to support: Basic Needs, Health, Self-Sufficiency and Youth programs and services.

I'm so proud of our fantastic team and Board of Directors that helped support initiatives for our organization to sustain a strong level of community funding. I'm grateful we were able to host our United by the Vine signature fundraising event raising nearly \$65,000 and host our leadership breakfast that raised a record-breaking \$15,000! We were an organization that benefited from COVID relief funding, including the PPP and ERC forgiveness loans, so we could maintain our level of disbursements to Washington County agencies.

We continue to have a deep sense of pride for our organization and the community that helps us act as a pillar to our local agencies so they can provide necessary programs and services.

Thank you for your trust and commitment to your local United Way.



DAN STARRY
Washington County Sheriff
Board of Directors President-



Jessica Ryan
Executive Director
United Way of Washington County - East

PARTNER AGENCIES

For over 70 years, United Way of Washington County - East has worked to fulfill its mission to unite our community and local resources to give each person the opportunity to build a better life.

With your support, we've improved the lives of thousands of individuals and families. Your donations help us fund programs to serve the priority needs in our community. Together, we can produce big results.

Mission: A caring, engaged and vibrant community, a place where each person has a stable foundation for today, and a hopeful future.



- Canvas Health
- Community Thread
- Courage Kenny
- EVOLVE Family Services
- FamilyMeans
- Hope Dental
- Hope House
- Lakeview Foundation
- Our Community Kitchen
- Portico Healthnet
- ServeMN
- Solid Ground
- Southern Minnesota Regional Services
- St. Andrew's Community Resource Center
- St. Croix Family Resource Center
- Tubman
- Valley Friendship Club
- Valley Outreach
- Youth Service Bureau

UNITED WAY OF WASHINGTON COUNTY-EAST

IMPACT AT A GLANCE



CAMPAIGN HIGHLIGHTS

\$643,085

Raised in our Annual Campaign

\$47,857

Raised by the Annual Stuff the Bus School Supply Drive

\$377,252

Was raised in residential giving

\$56,922

Was raised from workplace giving

\$520,000

Was distributed to our partnering agencies



YOUTH

Ensure that our children and youth can thrive, today and in the future.



BASIC NEEDS

Provide basic needs and financial stability, especially in these unpredictable economic times.



SELF-SUFFICIENCY

Support self-sufficiency and connect people to the services they need.



HEALTH

Improve health and independence, especially for those who are elderly, have disabilities, and/or who struggle with mental or physical illness.



YOUTH

IMPACT AT A GLANCE



GOAL

A chance to succeed, to be part of a team, development, enrichment and skills for life.



\$110,000 Distributed



20 Youth with intellectual and/or developmental disabilities were provided the opportunity to develop important social and life skills, maximizing their potential to be socially independent, healthy, thriving, and productive members of the community.



538 Youth received outpatient medical rehabilitation such as physical, occupational and speech therapies.



156 Students were tutored with personalized, evidence-based literacy interventions so that they did not continue to fall behind and to reach 3rd grade readiness for reading.

505 Students participated in a 6-week Voices in Prevention curriculum that engages youth in understanding violence, empathy, gender socialization, emotional regulation, communication and creating change.

564 Youth received early intervention, substance prevention, diversion, community education and youth mental health support.



SELF - SUFFICIENCY

IMPACT AT A GLANCE



GOAL

Support for the elderly or those disabled with transportation and connections to the community.



\$144,999

Distributed



189 Domestic violence victims were offered free legal services in criminal court and Orders for Protection.



335 Senior Citizens felt empowered and were provided with the tools and support systems necessary to maintain their independence, safely and with dignity.



164 individuals were offered comprehensive services to better help them achieve independence, and were provided a full range of high-quality services in civil matters which enables them to enforce their legal rights.

653 Individuals utilized transportations services to connect them to services and support independence.



BASIC NEEDS

IMPACT AT A GLANCE



GOAL

A place to sleep, food in the cupboard, and emergency financial assistance.



\$145,000 Distributed



More than **1,460,000**

Pounds of food distributed - the equivalent of nearly **1,215,000** meals.



27 Individuals were provided shelter (transitional or permanent housing) and/or permanent supportive housing for single mothers in recovery, as well as rental subsidies, outreach, and coordination.



48 Families were provided with shelter and counseled through the path of homelessness to stability.

10 Families were provided rapid-rehousing to support families experiencing homelessness, including food, clothing and household items, and the person-centered services essential to long-term stability.

49 Individuals received help with financial difficulties through Budget and Debt Counseling, Debt Management, Credit Report Review and Financial Education.



HEALTH

IMPACT AT A GLANCE



GOAL

Access to healthcare and medicine for those that cannot afford it.



\$120,000
Distributed



540 Individuals received mental health interventions and treatments



1,594 Disabled individuals received therapies that cater to the person as a whole, including medical therapies, mental health, and fitness services as well as care coordination.



1,103 Caregivers were supported and equip so that that they could sustain the role as caregiver and maintain their own overall well-being.

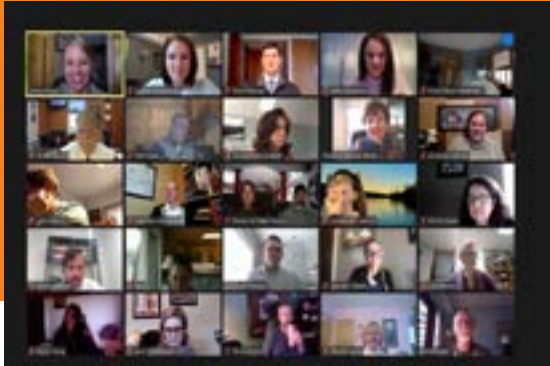
154 Students received counseling and therapy services to help address a wide variety of mental health issues and guide those students towards a healthier present and future.

297 Individuals were assisted in enrolling into health care coverage and understanding of how to use and navigate the health care system and access community resources.

224 Individuals were provided with free dental care for uninsured and low-income individual.



COMMUNITY ADVANCEMENT COMMUNITY INVESTMENT



Annually a group of more than 40 volunteers serve on the Community Investment committee, under UWWCE Board Member and Washington County Director of Community Corrections, Terry Thomas's leadership. This committee is responsible for making critical funding decisions on behalf of our United Way of Washington County - East through a formal review process including: the review of funding applications, conducting site visits and making recommendations for specific awards to the UWWCE Board of Directors.

Community Advancement consists of members of the United Way of Washington County East Board of Directors, healthcare professionals, Washington County professionals, business professionals and community members. The vision for this group is to understand our partner agencies' current abilities, and their plans, to reach for community change. We can then invest in them and their programs more effectively.

We have a formal partnership with Washington County Public Health and Environment that manages a model that supports and measures the impact of our agencies utilizing Results Based Accountability (RBA). In 2021, a Diversity, Equity and Inclusion (DEI) committee was formed to better understand our partnering agencies and the work around diversity, equity and inclusion. A formal social significance statement as integrated part of our organization's business and a workplan was developed to support a 2-year strategic business plan. A new important component of the funding application was added regarding the represented work with Diversity, Equity and Inclusion to better understand the capacity of each organization around DEI, and the larger community. Each funded agency annually submits two impact reports, consisting of two quarterly and one final report. These reports are compiled and entered into a database that measures against our four funding/impact areas. These ongoing results will support decisions made regarding funding of partnering agencies and help keep them accountable for their development and continued progress of their program measurements.

United
Way



United Way of
Washington County-East

celebrating
70
years

WOMEN UNITED



Women UNITED is an affiliate program of the United Way of Washington County - East. This past year we have worked closely with our partnering agency, Valley Outreach, to help enhance our focus to support working single parents in Washington County by providing job-enhancing programs and workshops funded by scholarships. We continue to evolve this program from the inclusion of only single mothers to all single parents that are working to improve the lives of their families through bettering their employment opportunities and a stronger community safety net. A formal partnership with Valley Outreach, Tubman, Solid Ground and St. Andrew's Community Resource Center is in place to help promote and support this program.

Women UNITED is a group of women that have a common passion and a shared cause. Since 2016, 16 scholarships have been awarded.



celebrating
70
years

YOUTH UNITED



In 1994, the United Way of Washington County - East formed the Youth United Way. The goal was to teach philanthropy to the next generation of donors and provide opportunities for youth to be involved in their home community. The Youth United Way program is youth-led, electing their own president (or co-presidents) who serve on the United Way of Washington County-East board of directors. They are a peer-led group, determining their own community priorities and activities with guidance from United Way staff and volunteers. The Youth United Way program provides a unique and valuable experience in organizing, volunteering, time management, leadership and philanthropy for a wide variety of teens in grades 6-12. The group holds their own fundraiser each year, with their largest and most substantial event the annual Empty Bowls Dinner to raise money for the local hunger programs. The goal of this event, which takes place every March, is to raise awareness that hunger can exist in our own community. Funds raised by the Youth United Way are distributed through their own grant/community investment process. As a group, they review all funding requests and make funding decisions.

Youth United Way accepts applications from local youth and hunger organizations and allocates the money raised throughout the year to the organizations based right in the Stillwater Area. Youth United Way has raised and allocated more than \$20,000 to local youth and hunger programs in the Stillwater Area. They help support feeding the hungry in our community through Valley Outreach, provide school based services aimed at preventing and reducing youth chemical use through the Youth Service Bureau, horseback riding to people with disabilities through Courage Kenny Riders, school based mental health with help from Family Means, and other programs supported by our partner organizations.



KAY CLINT & EMERGING NEEDS



The Kay Clint Fund for Emerging Needs, named for the first executive director of the United Way of Washington County - East, provides outreach support in the form of a grant to the community and provides a more immediate source of funding for emerging needs and supports new and innovative programs.

A group of volunteers lead the grants process including reviewing grant applications, and making recommendations for awards. These grants are reviewed and approved by the group of Kay Clint volunteers.

Recent grants have included:

- \$5,000 Bridge to Books - Their mission is to financially support the Imagination Library program in our area by covering the costs of the books provided. In doing so, they commit themselves to foster a love of reading, to treat every child and family with respect, and to invest in the imaginations and future of our youngest community members.



United Way of
Washington County-East

celebrating

70
years

PHILANTHROPIC LEADERS

CORPORATE PARTNERS

3M
3M Retirees
Acapulco
Anchored Health Chiropractic
Andersen Corporation
Anthem
Atticus Family Law
Bio Techne
Blue Cross Blue Shield
Bluestone Physicians Group
Bremer Bank
Budget Blinds
Caterpillar
City of Stillwater
Coldwell Banker
Cummins Power
Daily Grind
Deloitte & Touche
Deluxe Corp
Ecolab
Eli Lilly
Equitable
Ernst & Young
First State Bank and Trust
Forward Accounting
Garnet Real Estate
George Sigried Construction
Giestone, Ilc.

Group Edina Realty
Harland/Clark
Healing River Chiropractic
HealthPartners
Home to Sweet Home
Honeywell
IBM
Independent School District 834
Karen Stang- Carriage Realty
Kristina Lynn Photography
Lake Elmo Bank
Lakeview Hospital (HealthPartners)
Macy & Co
Lead Sheep Productions
Lift Bridge Nutrition
Mad Capper Saloon & Eatery
Mairs and Power
Mandee Puente- Agent M Insurance
Microsoft
MN State Employees
Morgan Stanley
Mudita Wellness
Nationwide Insurance
Northern Star Boy Scout
PartyLite
Pathfinder Insurance
PricewaterhouseCoopers
Principal Financial Group

RBC Wealth Management
Richard McDonough- RM Realty
Royal Credit Union
Scheel's Catering
Securian Financial Group
Security State Bank
Smith Barney
Smith Schafer
SRI
State Farm
Stillwater Medical (HealthPartners)
Target
The Lumberjack
The Tilted Tiki
The Toro Co
Thrivent Financial
Todd Scheel Catering
Travelers Express Group
Twin Cities Orthopedics
United Health Group
United Parcel Service
US Bancorp
US Bank Stillwater
Valley Bookseller
Victoriano's
Washington County
Weekes Forest Products
Wells Fargo
Xcel Energy Allen S. King Plant

TOCQUEVILLE

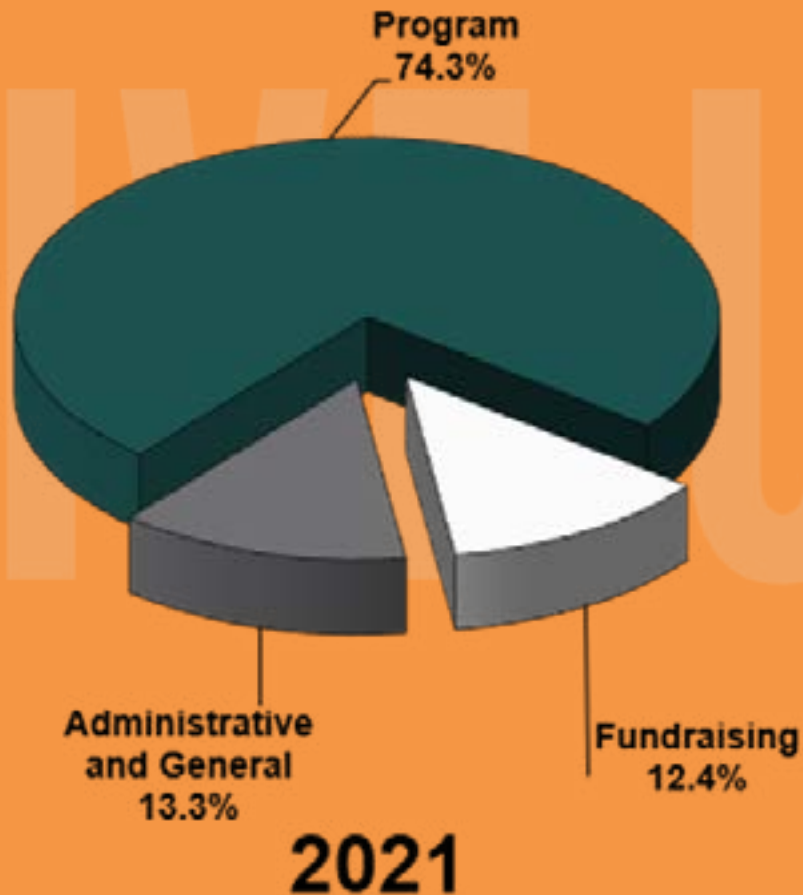
**Donations of \$10,000 +*
Phil and Debbie Flodin
Dr. David H. and Sandy Brandt
Ann and Dave Brookman
Dr. David and Marilyn Palmer
Tim and Kathy Ball
\$55,235+ Raised

PILLAR MEMBERS

**Donations of \$1,000 +*
Over 130+ Pillar Members
\$326,000+ Raised

FAMILY FOUNDATIONS

Fred C. and Katherine B. Andersen Foundation
Hardenbergh Foundation
Margaret H. James E. Kelley Foundation, Inc.
Margaret Rivers Fund



In 2021, our total expenses were \$935,083. We invested 74% of total expenses on program services. Fundraising, management and general expenses were 25% of related expenses.

FINANCIAL HIGHLIGHTS

Statement of Financial Position

June 30, 2021 and 2020

	2021	2020
ASSETS		
Current Assets		
Cash and cash equivalents	\$ 508,263	\$ 418,218
Certificates of deposit maturing in less than one year	37,883	30,428
Promises to give, less uncollectible allowances of \$34,000 in 2021 and \$36,000 in 2020	101,285	160,430
Other current receivable	40,432	-
Prepaid expenses and other current assets	6,709	6,540
Total Current Assets	<u>694,572</u>	<u>615,616</u>
Property and Equipment		
Equipment	59,868	59,868
Less: Accumulated depreciation	58,453	56,436
Total Property and Equipment, net	<u>1,415</u>	<u>3,432</u>
Other Assets		
Certificates of deposit maturing in more than one year	30,887	37,713
Market value of Legacy Endowment Fund	28,821	21,881
Total Other Assets	\$ <u>59,708</u>	\$ <u>59,594</u>
TOTAL ASSETS	\$ 755,695	\$ 678,642
LIABILITIES AND NET ASSETS		
Current Liabilities		
Fund distribution payable	288,427	289,526
Accounts payable and accrued expenses	30,709	20,391
Total Current Liabilities	<u>319,136</u>	<u>309,917</u>
Net Assets		
Without Donor Restrictions		
Undesignated	198,015	137,121
Designated reserve	181,707	181,707
Total Without Donor Restrictions	<u>379,722</u>	<u>318,828</u>
With Donor Restrictions		
Kay Clint	15,551	15,551
Women's Leadership Council	10,237	10,237
Youth United Way	2,228	2,228
Legacy endowment fund	28,821	21,881
Total With Donor Restrictions	<u>56,837</u>	<u>49,897</u>
Total Net Assets	<u>436,559</u>	<u>368,722</u>
TOTAL LIABILITIES AND NET ASSETS	\$ 755,695	\$ 678,642

Statement of Activities and Changes in Net Assets

For the year ended June 30, 2021.

With comparative totals for year ended June 30, 2020.

			Totals	
	Without Donor Restrictions	With Donor Restrictions	2021	2020
Public Support and Revenue				
Annual fall campaign	\$ 618,637	\$ -	\$ 618,637	\$ 683,071
Kay Clint	-	-	-	10,000
Youth United Way	-	-	-	2,357
Women's Leadership Council	-	-	-	3,510
Estimated uncollectible pledges	(25,542)	-	(25,542)	(34,626)
Net Campaign Support	593,095	-	593,095	664,312
Specific Grants	10,086	-	10,086	4,406
General Operating Grants	197,858	-	197,858	222,596
Debt forgiveness - SBA	47,500	-	47,500	41,200
COVID payroll tax credits	49,761	-	49,761	-
Fundraisers and events, net direct benefit to donors	63,000	-	63,000	17,733
Gifts in Kind	34,478	-	34,478	26,463
Investment return, net	950	6,940	7,890	1,480
Total Public Support and Revenue	996,728	6,940	1,003,668	978,190
Net Assets Released From Restrictions	-	-	-	-
Total Support Revenues	996,728	6,940	1,003,668	978,190
Net Functional Expenses	7,924	-	7,924	6,085
Services to members	1,996	-	1,996	4,861
Community education	99,501	-	99,501	102,948
Community building	585,487	-	585,487	666,904
Fund distribution	124,793	-	124,793	145,548
Management and general	116,133	-	116,133	87,194
Fundraising				
Total Net Functional Expenses	935,834	-	935,834	1,013,540
Increase (Decrease) in Net Assets Net	60,894	6,940	67,834	(35,350)
Assets - Beginning of Year	318,828	49,897	368,725	404,075
Net Assets - End of Year	\$ 379,722	\$ 56,837	\$ 436,559	\$ 368,725



Board of Directors

The Board of Directors has fiduciary oversight of United Way of Washington County - East and is responsible for overseeing the business affairs of the organization.

STAFF

- JESSICA RYAN
Executive Director
- LOIS CONN
Operations and Office Manager
- LAUREN SOBOLEWSKI
Development and Communications Manager
- KELLY STENERSON
Development and Community Engagement Manager

BOARD DIRECTORS

- DAN STARRY
Washington County Sheriff's Office (Washington County Sheriff)
President
Co-Chair Community Investment
- ANGIE DILLOW
Healthcare Strategic Consultant
AKD Consulting, LLC
Past-President
- TIM BALL
Ernst & Young (International Tax Partner)
Treasurer
- ELISA RASMUSSEN
Xcel Energy (Senior Foundation Representative)
Secretary

BOARD MEMBERS

- JOSEPH CARPENTIER
Xcel Energy (Operations Foreman)
- KIRSTEN CASTILLO
Women UNITED Liaison (Community Volunteer)
- DIANA M. EITZMAN, Ph. D. 3M (3M Critical & Chronic Care Solutions Division, Senior Technical Manager)
- PETE FLOCK
Andersen Corporation (Director - Customer Experience)
- BRIAN GOODWIN
UPS (Facilities Engineer)
- CARRIE HIGGS
Cub (Director of Marketing)
- RAMSEY JAMES
Xcel Energy (Business Process Specialist)

- CHRISTOPHER JOHNSON
Zenith American Solutions, Inc. (Chief Operating Officer)
- LOWELL JOHNSON
Washington County Public Health & Environment (Director)
Co-Chair Community Impact
- ANNETTE SALLMAN
Stillwater Area Public Schools (Director of Community Education)
- AARON SIEGLE
First Resource Bank (President)
- JEN SLETTEN
Stillwater Medical Group
Sletten & Brettin Orthodontics
- TERRY THOMAS
Washington County Sheriff's Office (Director)
- BILL TIEDEMANN
Hope House (Executive Director)
- SHARON TOLVA
Andersen Corporation (Corporate Controller)



United Way of
Washington County-East

United Way of Washington County - East
1825 Curve Crest Blvd
Stillwater, MN 55082
buildbetterlives.org